



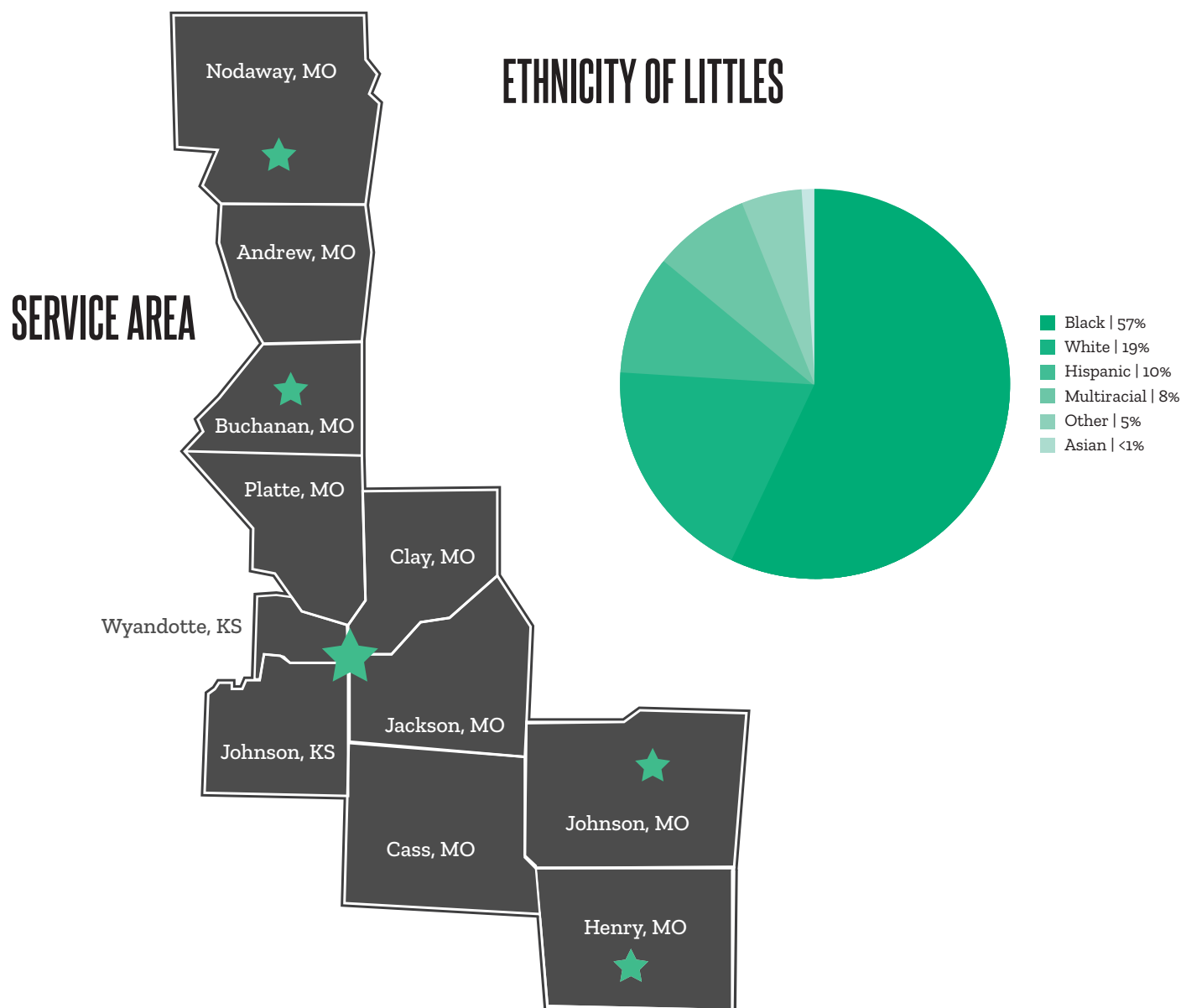
ABOUT BIG BROTHERS BIG SISTERS

STANDING TOGETHER TO DEFEND POTENTIAL

In a world of causes, we make a difference by creating professionally supported, one-to-one Matches for kids who want to realize their full potential. There are over 270 BBBS affiliates across the U.S. BBBSKC has consistently been recognized as one of the top agencies in the country for growth and quality of service.

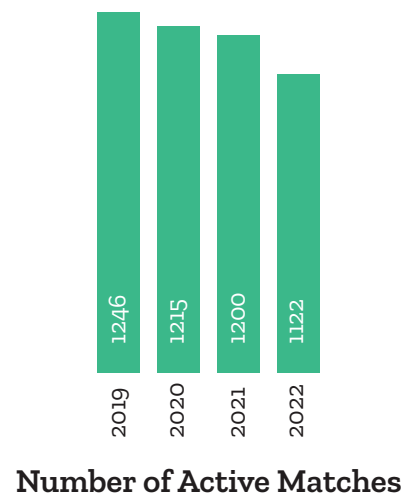
OUR PURPOSE

Empower every kid to graduate with a plan for their future and a mentor that lasts a lifetime.

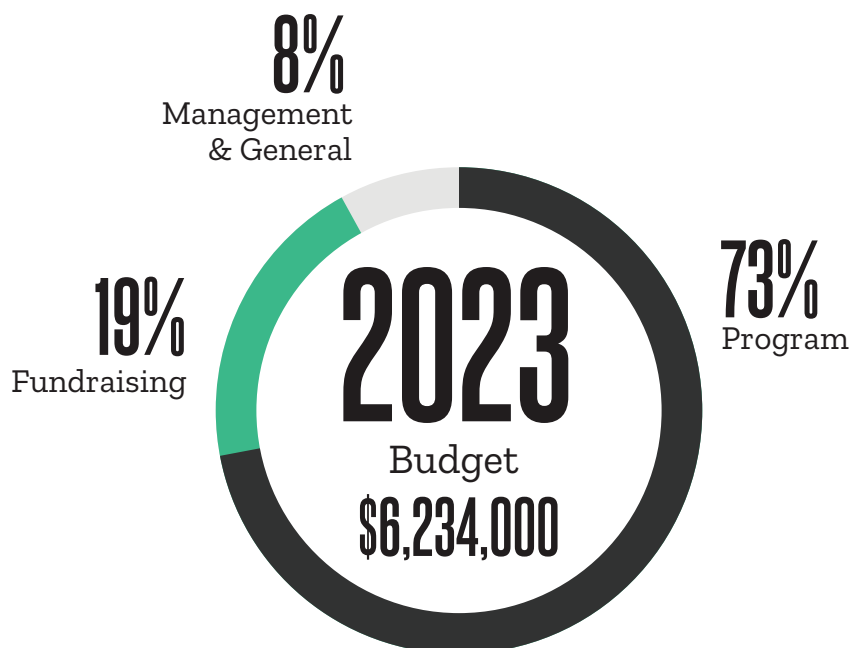
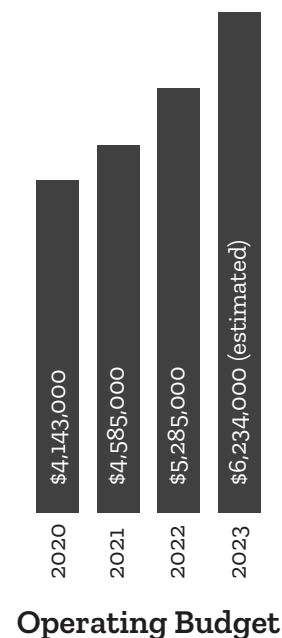


FINANCIAL INFORMATION

| | |
|----------------------|--------------|
| CASH | \$843,654 |
| OTHER CURRENT ASSETS | \$2,239,771 |
| TOTAL CURRENT ASSETS | \$3,083,425 |
| FIXED ASSETS | \$8,635,093 |
| OTHER ASSETS | \$873,114 |
| TOTAL ASSETS | \$12,591,632 |



| | |
|----------------------------|--------------|
| CURRENT LIABILITIES | \$373,712 |
| LONG TERM LIABILITIES | \$6,515,217 |
| NET ASSETS | \$5,702,703 |
| TOTAL LIAB. AND NET ASSETS | \$12,591,632 |



Audit available upon request:

Whitney Elyachar: whitney@bbbskc.org

LITTLES

99% SAY THEY LIKE THEIR BIG

SAY THEIR BIG HAS TAUGHT THEM SOMETHING NEW 91%

89% SAY THEIR BIG HAS HAD A POSITIVE IMPACT ON THEIR LIFE

BIGS

95%

Say they are happy with their decision to become a Big

95%

Say they have a positive relationship with their Little

93%

Say they feel confident in handling challenges as a mentor

Say their child has tried new experiences since being Matched

74%

Say BBBS has had a positive influence on their child

88%

PARENTS/
GUARDIANS

Say their child has a positive relationship with their Big

94%

SOMETHING BIG

We don't have to create potential—we just have to defend it.

Big Brothers Big Sisters Kansas City serves children and teens primarily from one-parent homes that want and truly need a mentor. BBBSKC matches Littles in 2nd-11th grade with Bigs in a one-to-one, life-changing friendship. Bigs and Littles hang out 2-3 times a month for a few hours doing normal, everyday activities, like going to see a movie, playing games, going out to eat, or just hanging out!

Each match is supported by a dedicated match support specialist who is always there to provide resources and support specific to the Little's age. With a Big in their life, children and teens in the BBBSKC program are empowered to ignite their potential as they grow in their self-esteem, earn better grades, and develop a lifelong friendship with their Big.

OUR LEADERSHIP

BOARD OF DIRECTORS

Our dedicated and talented Board of Directors leads the agency in making important decisions and guiding BBBSKC to success.

THRIFT OPERATIONS BOARD

This Board focuses on BBBSKC's partnership with Savers Thrift Stores and the clothing donation business. They make decisions that lead to a productive and profitable model that provides funding to the BBBSKC program.

FAMILY ADVISORY BOARD

The Family Advisory Board is designed to create a community of parents and guardians who are passionate about influencing the culture and impact of BBBSKC.

BIG IMPACT GROUP

The Big Impact Group is a group of dedicated young professionals who volunteer their time, talents, and energy to support fundraising and recruitment initiatives.

JEDI ADVISORY BOARD

The Big Brothers Big Sisters JEDI Advisory Board is a group of community leaders who work to increase exposure of the program and diverse communities, recruit Bigs, and champion justice, equity, diversity, and inclusion for the agency.

SIGNATURE EVENTS



May/June | Legacy is the premier client-entertainment golf tournament for community and business leaders in the Midwest. Golfers enjoy an extraordinary gift salon and more unmatched player amenities including: car wash, gourmet breakfast, massages, hot-towel shaves, cigar emporium, and more.



July | Bowl for Kids' Sake is Big Brothers Big Sisters' largest annual fundraiser and one of the biggest fundraisers in Kansas City. This month-long event encourages companies and individuals to form a team, fundraise for BBBS and enjoy a bowling party with food, drinks and entertainment.



Fall | The Empower Event is an annual event that honors the BBBSKC Bigs of the Year. This event is a morning of positivity and inspiration that provides attendees multiple opportunities to support Matches in Kansas City through monthly giving.



December | Annually, a class of dynamic, charitable, passionate, hard-working professionals are chosen to be honored as Kansas City's Most Wanted. These individuals are movers and shakers who are making a big difference in their profession and in their community. Each Honoree is recognized in *The Independent*, leads a fundraising campaign, and puts together a once-in-a-lifetime auction package to be auctioned off at the Most Wanted Auction benefiting BBBSKC.

OTHER WAYS TO HELP



Match Makers is BBBSKC's monthly giving program. Each month your contribution will introduce a new waiting Little to their Big. Monthly contributions of \$25, \$35, \$50, or an amount of your choice will be automatically deducted from your debit or credit card each month. You will receive monthly stories on the friendships you are creating. This is an easy way to make a Big impact.

BIG FUTURES PROGRAM

BBBSKC's program provides students with unique opportunities and support to help them reach their post-secondary goals. We are looking to partner with companies and organizations that can provide internship and employment opportunities, host career development workshops, or conduct business tours for students.

DONATE CLOTHES

Big Brothers Big Sisters is a partner with all local Savers Thrift Stores. This provides 25% of our operating budget. You can help by donating clothes and household items by dropping them off at a Savers store, dropping them off at one of the 150+ BBBS bin locations, or scheduling a pick up at your home.

LUNCH & LEARN

A great way to announce your partnership or to introduce your employees to BBBSKC is to host a Lunch & Learn at your office. Agency staff will talk in more detail about the agency and the different ways to get involved.

THIRD-PARTY EVENTS

If you are organizing a fundraiser for your group or company, consider making BBBSKC the beneficiary of your event. Third-party events can be as simple as a jeans day at work, or more involved, such as a golf tournament or 5k.

BBBSKC ORGANIZATION CHART

TOGETHER
WE ARE
DEFENDERS
OF POTENTIAL

Child/Student Enrollment

■ Littles

Volunteers/Supporters

■ Bigs, Parents, Boards, and Donors

Program Team

■ Child Enroll
■ 90 Day MS
■ Vol Enroll
■ Match Support
■ Quality Assurance & Resources

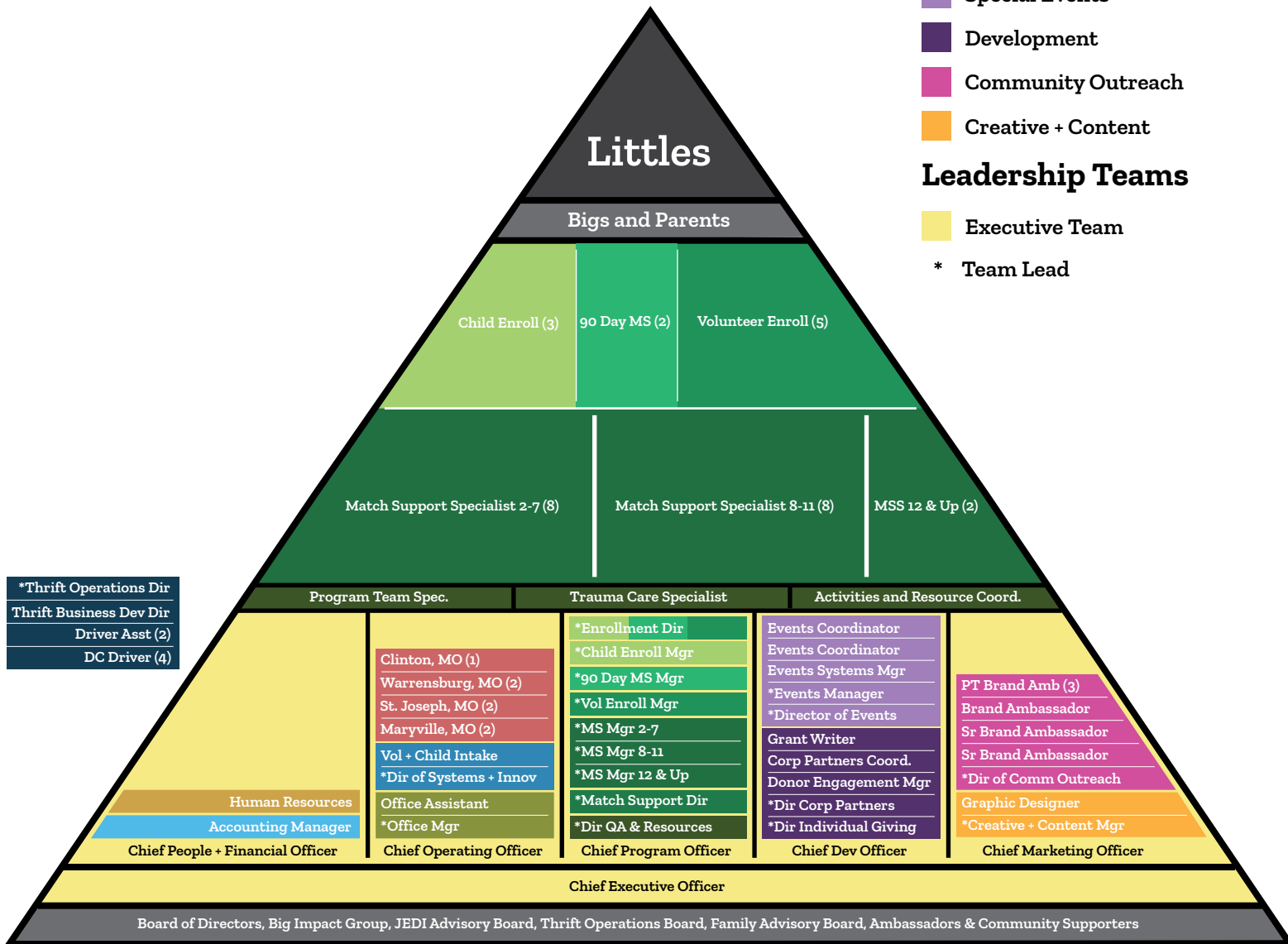
Support Teams

■ Human Resources
■ Donation Center
■ Finance
■ Satellite Offices
■ Systems + Intake
■ Office
■ Special Events
■ Development
■ Community Outreach
■ Creative + Content

Leadership Teams

■ Executive Team

* Team Lead





BOARD OF DIRECTORS

Defending Potential

2023 BOARD OF DIRECTORS



ALFREDO GARCÍA

RG Capital Partners



ANDREW GILSTRAP

GFI Digital Inc.



ANDY WILTZ

Woof's Play & Stay



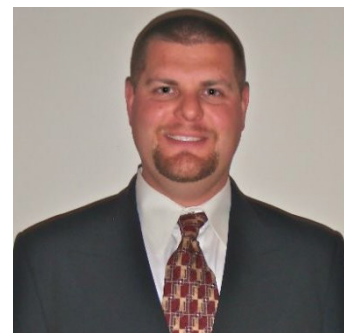
ANTHONY CAREY

Sensata Technologies



ASHLEY MAHONEY

Hello Big Idea



CHRIS EVANS

Evardy Construction, LLC

2023 BOARD OF DIRECTORS



CHRIS KOLQUIST



CYNTHIA SIMPSON

UMB Bank



DANA JERMAIN

Deloitte



DANA TATUM

GEHA



DELIA MARIN

Tico Productions



ERICA JONES

MMC Corp

2023 BOARD OF DIRECTORS



ISAAC COLLINS

Yogurtini KC



JEFF DREILING

Complete Legal



JEFF KING

Barkley



LIZ LEWIS

CommunityAmerica Credit Union



MARSHALL LOCKTON

Meraki Investments LLC



MELISSA BELTRAME

2023 BOARD OF DIRECTORS



RUTH BRACKNEY

Lathrop GPM



RYAN MANIES

McCownGordon Construction, LLC



SCOTT STRAWN

Burns & McDonnell



TANDRA STACER

Haas & Wilkerson Insurance



TANNER CAIN

UPS



YOLANDA WALDON

Literacy KC

LEADERSHIP GROUPS



BIG IMPACT GROUP

Defending Potential



BOARD OF AMBASSADORS

Defending Potential



JEDI ADVISORY BOARD

Igniting Potential



THRIFT OPERATIONS

Benefiting BBBSKC



FAMILY ADVISORY BOARD

Igniting Potential

LEADERSHIP GROUPS

AMBASSADORS

André Davis
Antonio Castanon
Brad Markes
Jennifer Matney
Jennifer Schuler
Jeremy Schafer
Jerry Cooke
Jim Lipari
Kevin Kalish
Kyle Myers
Lee Brumitt
Marc Woodward
Matt Linski
Paul Kushnir
Rachel Smith
Rik Siro
Rob Sprague
Ryan Shreve
Terry Satterlee
Thomas W. Van Dyke
Tom Holcom
Doug Jones

BIG IMPACT GROUP

Alessandra Graber
Alex Atkinson
Allison Clements
Andrew Vogliardo
Anthony Valles
Avery Bowers
Chad Gerdes
Charlie Mosher
Clay Roberts
Cody Blevins
Dana Isidro
Derek Stuchlik
Elizabeth Gabbert
Emily Thorpe
Erin Williamson
Haley Freeman
Jessica Jackson
Jessica Marsh
Josh Van Auken
Jordan Canupp
Justin Mutzbauer
Kaitlyn Steinacher
Katasha Kumar
Kate Marxkors
Leslie Mann

Liz Black
Loryn Polo
MacKenzie Magwire
Mary Cate Reinert
Mario Rodriguez
Megan McClure
Megan Heyen
Melanie Clark
Melissa Windon
Michael Klingler
Michael Giangregorio
Michelle Fontes
Mike Lierz
Olivia Meyer
Patrick LeSage
Shane Gordon
Sydney Sutherland
Taran Speak
Tegan Bruce
Tiandre Miller
Tim Jardine
Tony Dougherty
Zach Harsch
Zachary Pfannenstiel

JEDI ADVISORY BOARD

Alfred Jones
Allie Rojas-Meier
Brian Kantanka
Brittany Connor
Casi Riegle
Cathie Chesen
Chris Butler
Christopher Moore
David Rodriguez
Denise White
Donteavious Young
Hao Quach
Jay Hernandez
Jayson Cuba
Jenna Scott
Kimberlee Fields
Kim Wallace Carlson
Kyra Kendrick
Langston Jones
Lauren Rios
Leigh Doner
Luis Florez Jr.
Maira Hernandez
MaKenzie Yearby

Mohamed Dia
Na'im Al-Amin
Natalie Gonzales
Natasha Scruggs
Nicolette Rodriguez
Omar Husain
Rachael Pegg
Rani Lange
Ryan Bernsten
Sami Dunn
Shapree' Marshall
Suzy Graham
Thamara Subramanian
Tracy VanVlack
Veronica Ford

THRIFT OPERATIONS BOARD

Alex Block
Brandon McManamy
Brett Wacha
Ed Broxterman
Jason Buck
Jeff Shipley
Michael Briscoe
Mike Rivera
Robert Beltrame
Sandy Aschenbrenner
Scott Keen

FAMILY ADVISORY BOARD

Amy Drake
Angela Washington
Ashley Brockington
Cecily Griffin
Charlynn Marshall
Cindy Villa Aguirre
Deborah Murphy
Ebony Love
Essence Crosby
Fawn Lee
Giselle Taylor
Kizwanna Daniels
Mandy Danforth
Majorie Frazier
Natasha Grant
Pateisha Royal
Patrice Amos
Tamieka Robison
Tonette Cooper
Xavier Hankins



