



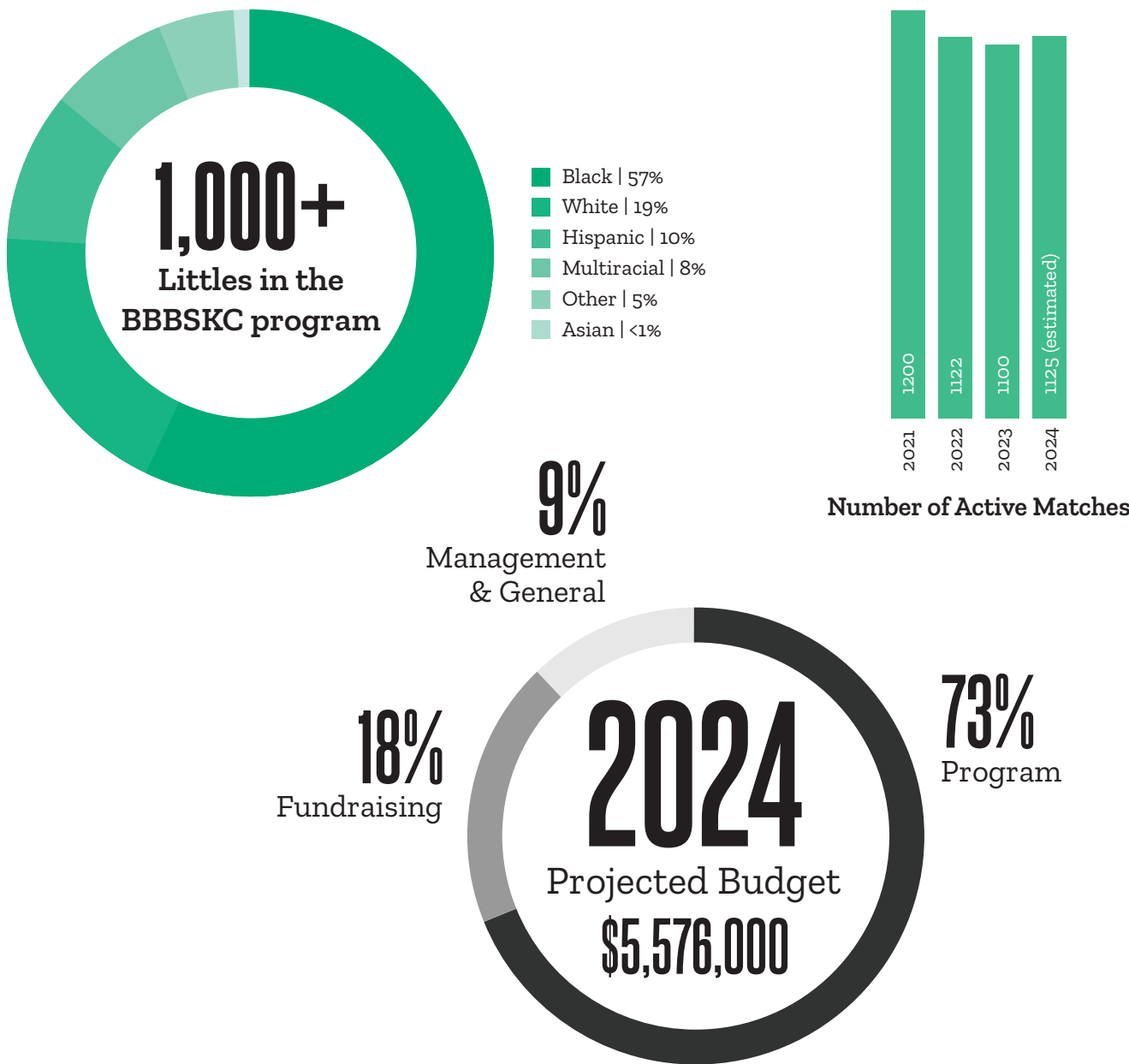
# ABOUT BIG BROTHERS BIG SISTERS

## STANDING TOGETHER TO DEFEND POTENTIAL

In a world of causes, we make a difference by creating professionally supported, one-to-one Matches for kids who want to realize their full potential. There are over 270 BBBS affiliates across the U.S. BBBSKC has consistently been recognized as one of the top agencies in the country for growth and quality of service.

## OUR PURPOSE

Empower every kid to graduate with a plan for their future and a mentor that lasts a lifetime.





DO SOMETHING BIG

We don't have to create potential—we just have to defend it.

Big Brothers Big Sisters Kansas City serves children and teens primarily from one-parent homes that want and truly need a mentor. BBBSKC matches Littles in 2nd-11th grade with Bigs in a one-to-one, life-changing friendship. Bigs and Littles hang out 2-3 times a month for a few hours doing normal, everyday activities like going to see a movie, playing games, going out to eat, or just hanging out!

Each match is supported by a dedicated Match Support Specialist who is always there to provide resources and support specific to the Little's age. With a Big in their life, children and teens in the BBBSKC program are empowered to ignite their potential as they grow in their self-esteem, earn better grades, and develop a lifelong friendship with their Big.

OUR LEADERSHIP

BOARD OF DIRECTORS

Our dedicated and talented Board of Directors leads the BBBSKC agency in making important decisions and guiding BBBSKC to success.

THRIFT OPERATIONS BOARD

This Board focuses on BBBSKC's partnership with Savers Thrift Stores and the clothing donation business. They make decisions that lead to a productive and profitable model that provides funding to the BBBSKC program.

FAMILY ADVISORY BOARD

The Family Advisory Board is designed to create a community of parents and guardians who are passionate about influencing the culture and impact of BBBSKC.

BIG IMPACT GROUP

The Big Impact Group is a group of dedicated young professionals who volunteer their time, talents, and energy to support fundraising and recruitment initiatives.

JEDI ADVISORY BOARD

The Big Brothers Big Sisters JEDI Advisory Board is a group of community leaders who work to increase exposure of the program and diverse communities, recruit Bigs, and champion justice, equity, diversity, and inclusion for the agency.

BBBSKC AMBASSADORS

BBBSKC Ambassadors serve as volunteer leaders who foster the agency's growth and good work following the conclusion of their formal responsibilities as part of one of the BBBSKC boards. This group invests in special scholarships to provide deeper support to our Littles and their families.

# SIGNATURE EVENTS



**May/June** | Legacy is the premier client-entertainment golf tournament for community and business leaders in the Midwest. Golfers enjoy an extraordinary gift salon and more unmatched player amenities including: car wash, gourmet breakfast, massages, hot-towel shaves, cigar emporium, and more.



**July** | Bowl for Kids’ Sake is Big Brothers Big Sisters’ largest annual fundraiser and one of the biggest fundraisers in Kansas City. This month-long event encourages companies and individuals to form a team, fundraise for BBBS and enjoy a bowling party with food, drinks and entertainment.



**August** | Rise is a unique event where attendees crawl through the rooftops of the Crossroads District. Guests enjoy food, drinks, music, and themed fun as they travel from one rooftop to the next, ending with an afterparty celebration.



**December** | Annually, a class of dynamic, charitable, passionate, hard-working professionals are chosen to be honored as Kansas City’s Most Wanted. These individuals are movers and shakers who are making a big difference in their profession and in their community. Each Honoree is recognized in *The Independent*, leads a fundraising campaign, and puts together a once-in-a-lifetime auction package to be auctioned off at the Most Wanted Auction benefiting BBBSKC.

# OTHER WAYS TO HELP



Match Makers is BBBSKC’s monthly giving program. Each month, your contribution will introduce a new waiting Little to their Big. Monthly contributions of \$25, \$35, \$50, or an amount of your choice will be automatically deducted from your debit or credit card each month. You will receive monthly stories on the friendships you are creating. This is an easy way to make a Big impact.

## BIG FUTURES PROGRAM

BBBSKC’s Big Futures program provides students with unique opportunities and support to help them reach their post-secondary goals. We are looking to partner with companies and organizations that can provide internship and employment opportunities, host career development workshops, or conduct business tours for students.

## THRIFT OPERATIONS

BBBSKC is a partner with all local Savers thrift stores. This provides 25% of our operating budget. You can help by donating clothes and household items by dropping them off at a Savers store or at one of the 150+ BBBS white clothing donation bins. You can also help by hosting a clothing donation drive at your office or by connecting BBBSKC staff to a new, visible clothing donation bin location. When a business or property owner donates a single parking spot for one of our donation bins, it can generate thousands of dollars of revenue for the agency annually.

## LUNCH & LEARN

A great way to announce your partnership or to introduce your employees to BBBSKC is to host a Lunch & Learn at your office. Agency staff will talk in more detail about the agency and the different ways to get involved.

## THIRD-PARTY EVENTS

If you are organizing a fundraiser for your group or company, consider making BBBSKC the beneficiary of your event. Third-party events can be as simple as a jeans day at work, or more involved, such as a golf tournament or 5k.



BBBSKC EXECUTIVE STAFF DIRECTORY

NAME	TITLE	EMAIL	PHONE
Micheal Lawrence	Chief Executive Officer	micheal@bbbskc.org	816-777-2888
Erica Ostroski	Chief Operating Officer	erica@bbbskc.org	816-777-2880
Kristi Hutchison	Chief Marketing Officer	kristi@bbbskc.org	816-777-2871
Tiffany Stuck	Chief Development Officer	tiffany@bbbskc.org	816-777-2872
Tonya Jackson	Chief Program Officer	tonya@bbbskc.org	816-777-2875
Whitney Elyachar	Chief People & Financial Officer	whitney@bbbskc.org	816-777-2585



BBBSKC ORGANIZATION CHART

TOGETHER  
WE ARE  
DEFENDERS  
OF POTENTIAL







## BOARD OF DIRECTORS

Defending Potential



2024 BOARD OF DIRECTORS



**ALFREDO GARCÍA**  
RG Capital Partners



**ANDREW GILSTRAP**  
GFI Digital Inc.



**CHRIS KOLQUIST**  
Koliway LLC



**DANA JERMAIN**  
Deloitte



**ANDY WILTZ**  
Woof's Play & Stay



**ANTHONY CAREY**  
Sensata Technologies



**DANA TATUM**  
GEHA



**DELIA MARIN**  
Tico Productions



**ASHLEY MAHONEY**  
Hello Big Idea



**CHRIS EVANS**  
Evardy Construction



**ERICA JONES**  
MMC Corp



**ISAAC COLLINS**  
Yogurtini Frozen Yogurt

2024 BOARD OF DIRECTORS



**JEFF JANDA**  
*Saint Luke's Hospital*



**JEFF DREILING**  
*Complete Legal*



**MARSHALL LOCKTON**  
*Meraki Investments LLC*



**PAMELA BREUCKMANN**  
*Ferrell Capital, Inc.*



**JULIE AITKENS**  
*KCNSC*



**KIRSTIN BORMANN**  
*H&R Block*



**RYAN MANIES**  
*McCownGordon Construction*



**SCOTT STRAWN**  
*Burns & McDonnell*



**LIZ LEWIS**  
*UMB Bank*



**LOVELL HOLLOWAY**  
*Vantage Airport Group*



**TANDRA STACER**  
*Haas & Wilkerson Insurance*



**YOLANDA WALDON**  
*Literacy KC*



**ZORAYA ROWLANDS**  
*J. E. Dunn Construction*





2024 THRIFT OPERATIONS BOARD



ALEX BLOCK  
Block & Company Inc., Realtors



BETHANY WADDLETON  
Randstad RiseSmart



EMILY HAAS  
BioNexus KC



JASON BUCK  
Blue Cross Blue Shield of KC



BRANDON MCMANAMY  
Accenture



BRETT WACHA  
Edward Jones



JEFF SHIPLEY  
Concentrix Catalyst



MANUEL AQUINO  
UPS



BRIAN THOMAS  
AMC Theatres



CAMERON WILKERSON  
Ball's Food Stores



MARIA HOHEUSLE  
Eversana



MELANIE TULL  
Tull & Co





**MICHAEL BRISCOE**  
*Monarch*



**MIKE RIVERA**  
*Asset Management Group*



**NICK GIULIANI**  
*Dynamic Logistix LLC*



**ROBERT BELTRAME**  
*Garmin International*



**SANDRA WATTS**  
*Rouse Frets White Goss*



**SCOTT KEEN**  
*Fajita Pete's Overland Park*

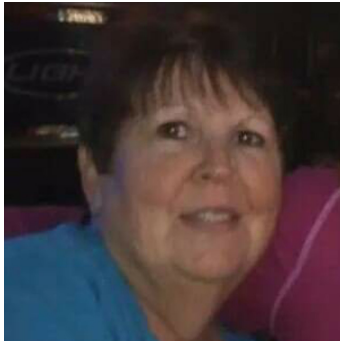




AMY DRAKE  
Edward Jones



ANGELA WASHINGTON



DEBORAH MURPHY



EBONY LOVE  
UMB Bank



ASHLEY BROCKINGTON  
University Health - Hospital Hill



CECILY GRIFFIN  
CBIZ



FAWN LEE



GIESELLE TAYLOR  
MidAmerica Nazarene University



CHARLYNN MARSHALL  
CommunityAmerica Credit Union



CINDY VILLA AGUIRRE  
Creative Colors LLC



KIZWANA DANIEL  
Rose Estate



MANDY DANFORTH  
Shawnee Mission East High School





MARJORIE FRAZIER  
*Platinum Realty*



NATASHA GRANT  
*Starbucks*



XAVIER HANKINS  
*Literacy KC*



PATEISHA ROYAL  
*UAW-LETC*



PATRICE AMOS  
*IRS*



TAMIEKA ROBINSON  
*Azria Health Olathe*



TONETTE COOPER



**BIG IMPACT GROUP**  
Defending Potential



**ALEX ATKINSON**  
*Atkinson Media House*



**ANDREW VOGLIARDO**  
*Self Employed*



**ANTHONY VALLES**  
*Lockton Companies*



**AVERY BOWERS**  
*Environmental Protection Agency*



**CAROLINE SHANNON**  
*KPMG*



**CHAD GERDES**  
*Renaissance Financial*





**CHARLIE MOSHER**  
*Creative Planning*



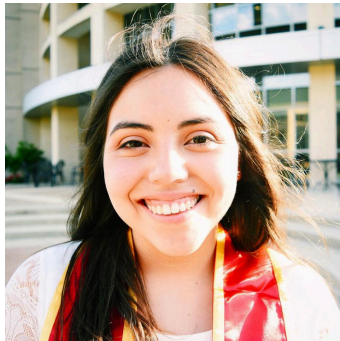
**CODY BLEVINS**  
*FORVIS*



**ERIN WILLIAMSON**  
*InMobi*



**JESSICA JACKSON**  
*Slalom*



**DANIA ISIDRO**  
*US Army Corps of Engineers*



**DAVE GARDNER**  
*Children's Mercy*



**JESSICA MARSH**  
*Kansas City University*



**JORDAN CANUPP**  
*Creative Planning*



**DEREK STUCLIK**  
*Burns & McDonnell*



**EMILY THORPE**  
*Children's Mercy*



**JUSTIN MUTZBAUER**  
*Marsh McLennan Agency*



**KAITLYN STEINACHER**  
*Crossroads Charter Schools*



KATE MARXKORS  
Concord



KRISTINA IYAMU  
Turner Construction



MEGAN MCCLURE  
Signal Theory



MELANIE CLARK  
Kansas City Business Journal



LIZ BLACK  
Real Brokerage, LLC



LORYN POLO  
Shamrock Trading Corporation



MICHAEL KLINGLER  
IVX Health



MICHELLE FONTES  
Federal Reserve Bank of Kansas City



MACKENZIE MAGWIRE  
ReeceNichols Sold by Colby Team



MEGAN HEYEN  
Burns & McDonnell



MICHELLE VILLAGRANA  
Renaissance Financial



NOAH BENHAM  
Expedia Group

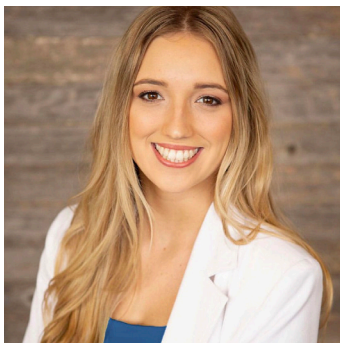




**OLIVIA MEYER**  
*Netsmart Technologies*



**PAUL SILVIO**  
*Arrived Outdoors*



**TEAGAN BRUCE**  
*SEEK Real Estate*



**TIANDRE MILLER**  
*Department of Veterans Affairs*



**RYAN HEMBROUGH**  
*Bank of Springfield*



**SAM ZIMMERMAN**  
*KPMG*



**TIM JARDINE**  
*Holmes Murphy*



**TONY DOUGHERTY**  
*Clinch*



**SHANNON KILKENNY**  
*Terracon Consultants*



**SYDNEY SUTHERLAND**  
*Oracle*



**ZACH BOSWELL**  
*Paric*



**ZACH HARSCH**  
*Amwins Insurance Brokerage*



**ALFRED JONES**  
*Hallmark Cards, Inc.*



**ALLIE ROJAS-MEIER**  
*University Health*



**BRAULIO RIVAS**  
*Olathe Dodge*



**BRIAN KANTANKA**  
*Sisyphus Investments*



**BRITTANY CONNOR**  
*United Way of Greater Kansas City*



**BROOKE THIES**  
*Yogurtini KC*





CASI RIEGLE  
City Year KC



CATHIE CHESEN  
Reece Nichols



DONTAVIOUS YOUNG  
Equal Minded Cafe



HAO QUACH  
Ginkgo Embroidery



CHRISTOPHER MOORE  
T-Mobile



CLEO VAN VLACK  
Consultant; Anthropologie



IHEANYI AMADI  
KU School of Medicine



JAY HERNANDEZ  
KCFD



DAVID RODRIGUEZ  
BodySmith Personal Training



DENISE WHITE  
Belton Regional Medical Center



JENNA SCOTT  
Catalyst Development



JORDAN RUSSO-HICKS  
State Farm



**KIMBERLEE FIELDS**  
*Johnson County Mental Health*



**KYRA KENDRICK**  
*Women Leaders in Sports*



**MOHAMED DIA**  
*KCNSC managed by Honeywell FM&T*



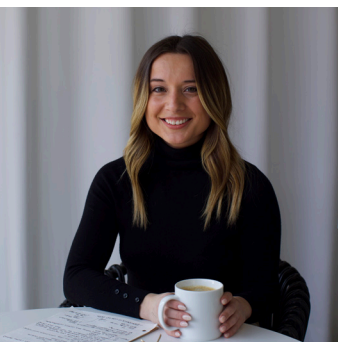
**MORGAN ESPAÑA-BENITEZ**  
*Head for the Cure Foundation*



**LANGSTON JONES**  
*ICF*



**LAUREN RIOS**  
*Platinum XP*



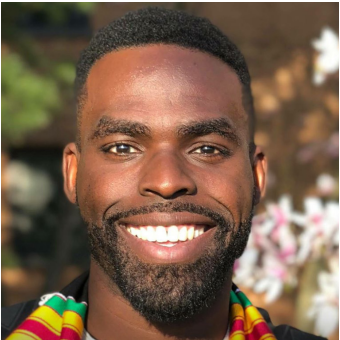
**NATALIE GONZALES**  
*AMR Digital*



**NICOLETTE RODRIGUEZ**  
*Stinson LLP*



**LEIGH DONER**  
*Rx Savings Solutions*



**MAKENZY JEAN**  
*Associated Humanity*



**OMAR HUSAIN**  
*Schaffer and Associates*



**QUINCY CRUTCHFIELD**  
*Night Market LLC*





**RANI LANGE**  
*My Next Season*



**SAMI DUNN**  
*Saint Luke's Bishop Spencer Place*



**SHAPREE MARSHALL**  
*A Traveled Path Homes*



**SYDNEY GOLDBERG**  
*Goldberg Group Architects*



**VERONICA FORD**  
*KCNSC managed by Honeywell FM&T*

IMPORTANT DATES

- May 20** | Legacy – Loch Lloyd
- June 10** | Legacy – The National
- July** | Summer Bowl for Kids’ Sake
- August** | Summer Bowl for Kids’ Sake Super Team Party
- August** | Big & Little Day at the K
- August 24** | Rise Rooftop Crawl
- December 14** | Most Wanted Auction





IT TAKES  
LITTLE TO  
BE BIG



