



# ABOUT BIG BROTHERS BIG SISTERS

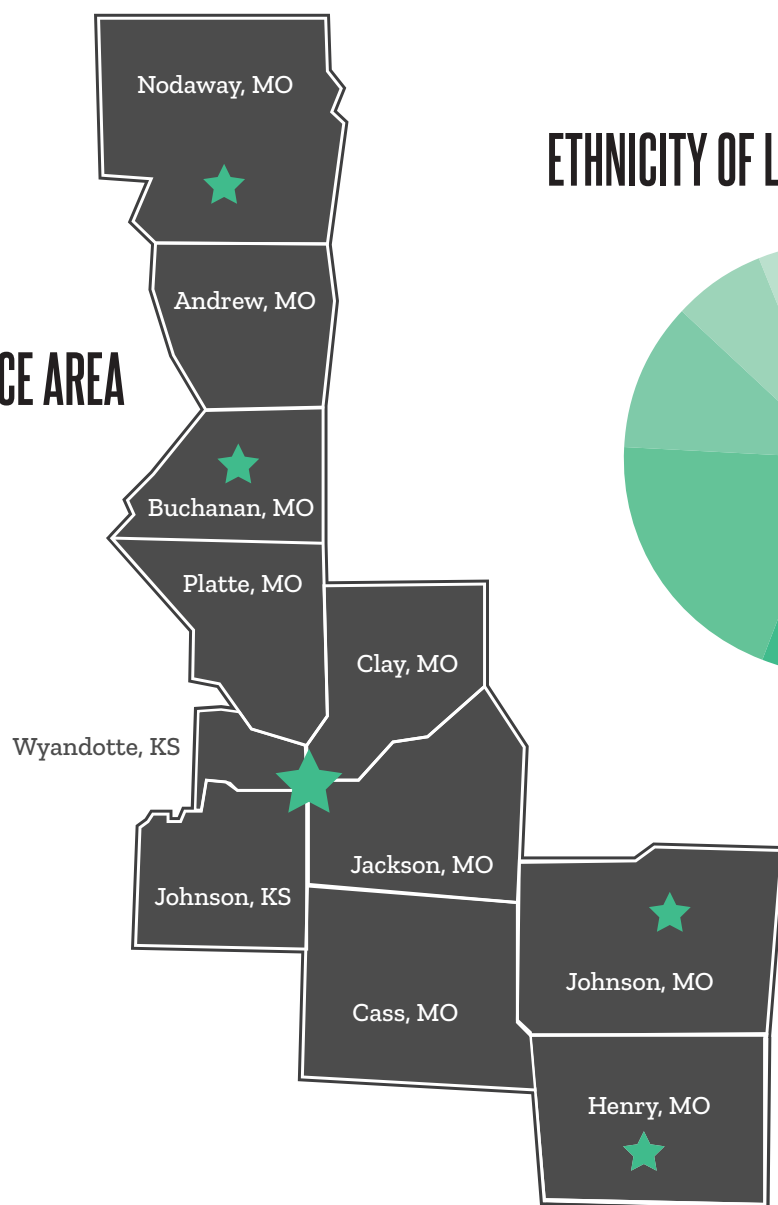
## STANDING TOGETHER TO DEFEND POTENTIAL

In a world of causes, we make a difference by creating professionally supported, one-to-one Matches for kids who want to realize their full potential. There are over 270 BBBS affiliates across the U.S. BBBSKC has consistently been recognized as one of the top agencies in the country for growth and quality of service.

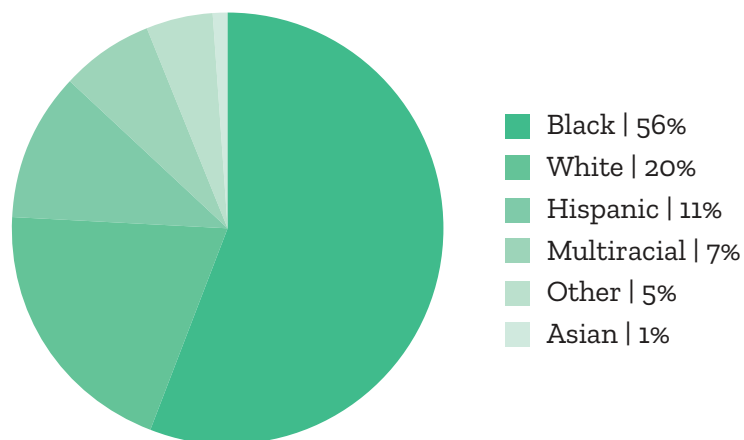
## OUR PURPOSE

Empower every kid to graduate with a plan for their future and a mentor that lasts a lifetime.

### SERVICE AREA

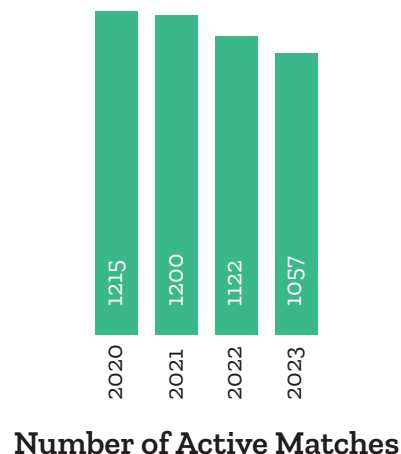


### ETHNICITY OF LITTLES



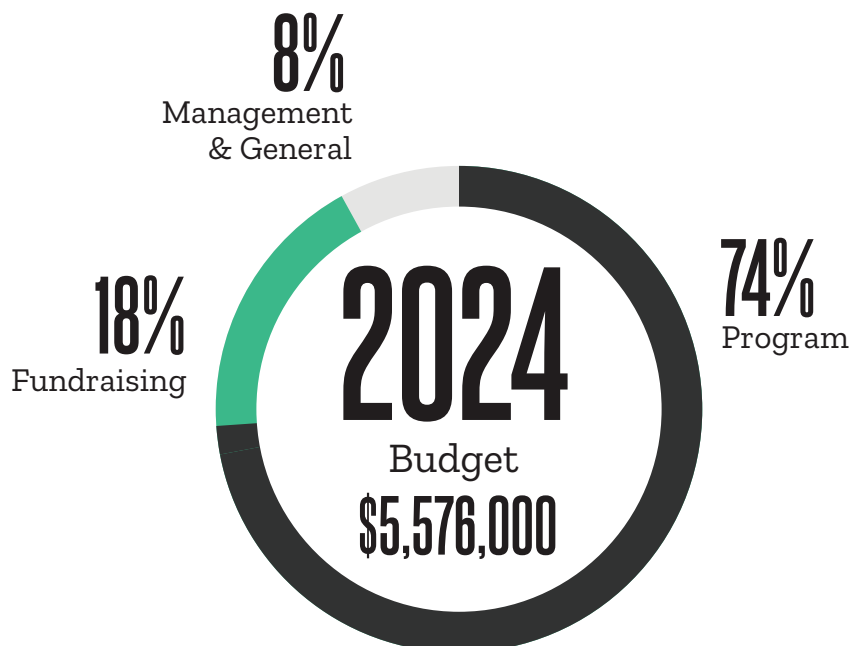
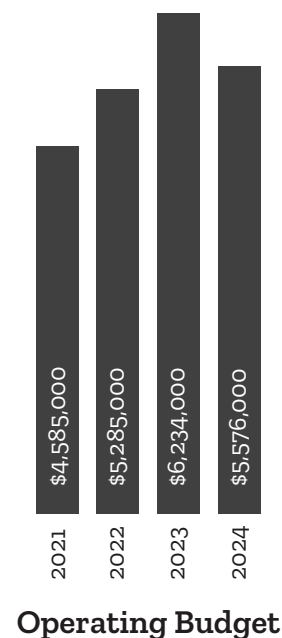
# FINANCIAL INFORMATION

CASH	\$435,459
OTHER CURRENT ASSETS	\$1,006,947
TOTAL CURRENT ASSETS	\$1,442,406
FIXED ASSETS	\$8,067,349
OTHER ASSETS	\$755,653
TOTAL ASSETS	\$10,265,408




---

CURRENT LIABILITIES	\$168,809
LONG TERM LIABILITIES	\$6,353,412
NET ASSETS	\$3,743,187
TOTAL LIAB. AND NET ASSETS	\$10,265,408



**Audit available upon request:**  
Whitney Elyachar: [whitney@bbbskc.org](mailto:whitney@bbbskc.org)

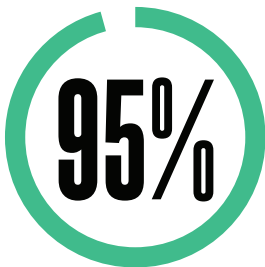
# LITTLES

99% SAY THEY LIKE THEIR BIG

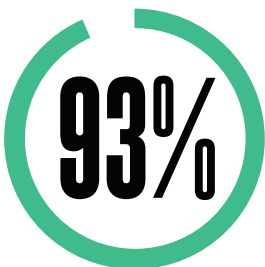
97% SAY HAVING A BIG HAS HAD A POSITIVE IMPACT ON THEIR LIFE

91% SAY SPENDING TIME WITH THEIR BIG MAKES THEM FEEL BETTER ABOUT THEMSELVES

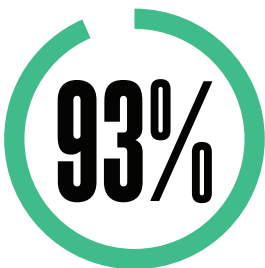
# BIGS



Say they are happy with their decision to become a Big



Say they are a compatible Match with their Little



Say they feel confident in handling challenges as a mentor

# OUR IMPACT

Say they have noticed a positive change in their child since enrolling in BBBS

86%

Say they have a positive relationship with their child's Big

89%

# PARENTS/ GUARDIANS

Say their child has a positive relationship with their Big

94%

# SOMETHING BIG

We don't have to create potential—we just have to defend it.

Big Brothers Big Sisters Kansas City serves children and teens primarily from one-parent homes who want and truly need a mentor. BBBSKC matches Littles in 2nd-11th grade with Bigs in a one-to-one, life-changing friendship. Bigs and Littles hang out 2-3 times a month for a few hours doing normal, everyday activities, like going to see a movie, playing games, going out to eat, or just hanging out!

Each match is supported by a dedicated match support specialist who is always there to provide resources and support specific to the Little's age. With a Big in their life, children and teens in the BBBSKC program are empowered to ignite their potential as they grow in their self-esteem, earn better grades, and develop a lifelong friendship with their Big.

## OUR LEADERSHIP

### BOARD OF DIRECTORS

Our dedicated and talented Board of Directors leads the agency in making important decisions and guiding BBBSKC to success.

### THRIFT OPERATIONS BOARD

This Board focuses on BBBSKC's partnership with Savers Thrift Stores and the clothing donation business. They make decisions that lead to a productive and profitable model that provides funding to the BBBSKC program.

### FAMILY ADVISORY BOARD

The Family Advisory Board is designed to create a community of parents and guardians who are passionate about influencing the culture and impact of BBBSKC.

### BIG IMPACT GROUP

The Big Impact Group is a group of dedicated young professionals who volunteer their time, talents, and energy to support fundraising and recruitment initiatives.

### JEDI ADVISORY BOARD

The Big Brothers Big Sisters JEDI Advisory Board is a group of community leaders who work to increase exposure of the program and diverse communities, recruit Bigs, and champion justice, equity, diversity, and inclusion for the agency.

# SIGNATURE EVENTS



**May/June** | Legacy is the premier client-entertainment golf tournament for community and business leaders in the Midwest. Golfers enjoy an extraordinary gift salon and more unmatched player amenities including: car wash, gourmet breakfast, massages, hot-towel shaves, cigar emporium, and more.



**July** | Bowl for Kids' Sake is Big Brothers Big Sisters' largest annual fundraiser and one of the biggest fundraisers in Kansas City. This month-long event encourages companies and individuals to form a team, fundraise for BBBS and enjoy a bowling party with food, drinks and entertainment.



**September** | The Empower Event is an annual event that honors the BBBSKC Bigs of the Year. This event is a morning of positivity and inspiration that provides attendees multiple opportunities to support Matches in Kansas City through monthly giving.



**December** | Annually, a class of dynamic, charitable, passionate, hard-working professionals are chosen to be honored as Kansas City's Most Wanted. These individuals are movers and shakers who are making a big difference in their profession and in their community. Each Honoree is recognized in *The Independent*, leads a fundraising campaign, and puts together a once-in-a-lifetime auction package to be auctioned off at the Most Wanted Auction benefiting BBBSKC.

# OTHER WAYS TO HELP



Match Makers is BBBSKC's monthly giving program. Each month your contribution will introduce a new waiting Little to their Big. Monthly contributions of \$25, \$35, \$50, or an amount of your choice will be automatically deducted from your debit or credit card each month. You will receive monthly stories on the friendships you are creating. This is an easy way to make a Big impact.

## BIG FUTURES PROGRAM

BBBSKC's program provides students with unique opportunities and support to help them reach their post-secondary goals. We are looking to partner with companies and organizations that can provide internship and employment opportunities, host career development workshops, or conduct business tours for students.

## DONATE CLOTHES

Big Brothers Big Sisters is a partner with all local Savers Thrift Stores. This provides 25% of our operating budget. You can help by donating clothes and household items by dropping them off at a Savers store, dropping them off at one of the 150+ BBBS bin locations, or scheduling a pick up at your home.

## LUNCH & LEARN

A great way to announce your partnership or to introduce your employees to BBBSKC is to host a Lunch & Learn at your office. Agency staff will talk in more detail about the agency and the different ways to get involved.

## THIRD-PARTY EVENTS

If you are organizing a fundraiser for your group or company, consider making BBBSKC the beneficiary of your event. Third-party events can be as simple as a jeans day at work, or more involved, such as a golf tournament or 5k.

# BBBSKC ORGANIZATION CHART

TOGETHER  
WE ARE  
DEFENDERS  
OF POTENTIAL

## Child/Student Enrollment

■ Littles

## Volunteers/Supporters

■ Bigs, Guardians, Boards, and Donors

## Program Team

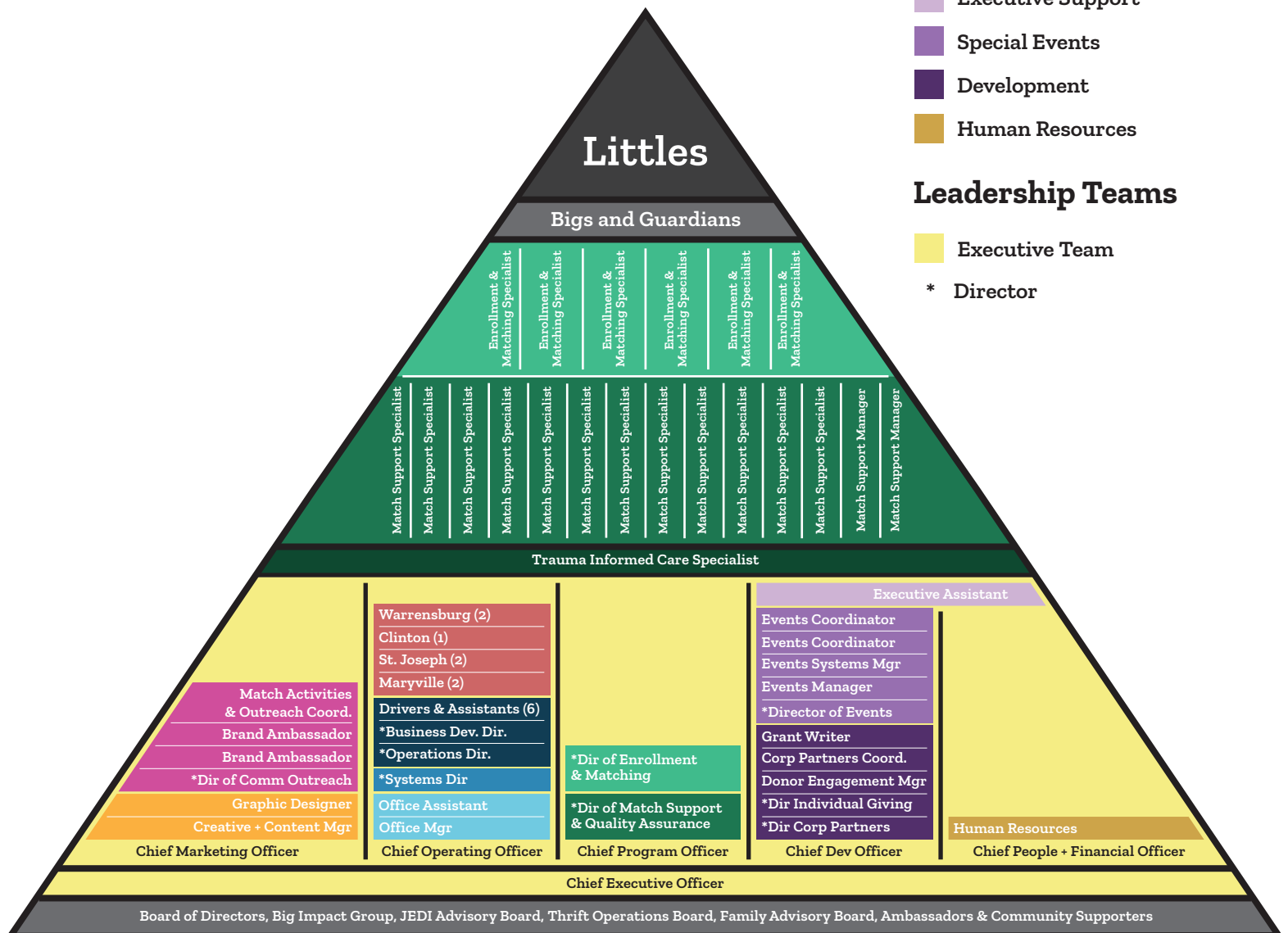
■ Enrollment & Matching  
■ Match Support  
■ Resources

## Support Teams

■ Community Outreach  
■ Creative + Content  
■ Satellite Offices  
■ Thrift  
■ Systems  
■ Office  
■ Executive Support  
■ Special Events  
■ Development  
■ Human Resources

## Leadership Teams

■ Executive Team  
\* Director





# BOARD OF DIRECTORS

Defending Potential

# 2024 BOARD OF DIRECTORS



**ALFREDO GARCÍA**

*RG Capital Partners*



**ANDREW GILSTRAP**

*GFI Digital Inc.*



**ANDY WILTZ**

*Woof's Play & Stay*



**ANTHONY CAREY**

*Sensata Technologies*



**ASHLEY MAHONEY**

*Hello Big Idea*



**CHRIS EVANS**

*Evardy Construction*

# 2024 BOARD OF DIRECTORS



**CHRIS KOLQUIST**

*Koliway LLC*



**DANA JERMAIN**

*Deloitte*



**DANA TATUM**

*GEHA*



**DELIA MARIN**

*Tico Productions*



**ERICA JONES**

*MMC Corp*



**ISAAC COLLINS**

*Yogurtini Frozen Yogurt*

# 2024 BOARD OF DIRECTORS



**JEFF JANDA**

*Saint Luke's Hospital*



**JEFF DREILING**

*Complete Legal*



**JULIE AITKENS**

*KCNSC*



**KIRSTIN BORMANN**

*H&R Block*



**LIZ LEWIS**

*UMB Bank*



**LOVELL HOLLOWAY**

*Vantage Airport Group*

# 2024 BOARD OF DIRECTORS



**MARSHALL LOCKTON**

*Meraki Investments LLC*



**PAMELA BREUCKMANN**

*Ferrell Capital, Inc.*



**RYAN MANIES**

*McCownGordon Construction*



**SCOTT STRAWN**

*Burns & McDonnell*



**TANDRA STACER**

*Haas & Wilkerson Insurance*



**YOLANDA WALDON**

*Literacy KC*

# 2024 BOARD OF DIRECTORS



**ZORAYA ROWLANDS**

*J. E. Dunn Construction*

# LEADERSHIP GROUPS



## **BIG IMPACT GROUP**

Defending Potential



## **BOARD OF AMBASSADORS**

Defending Potential



## **JEDI ADVISORY BOARD**

Igniting Potential



## **THRIFT OPERATIONS**

Benefiting BBBSKC



## **FAMILY ADVISORY BOARD**

Igniting Potential

# LEADERSHIP GROUPS

## AMBASSADOR NETWORK

Andre' Davis  
Antonio Castanon  
Brad Markes  
Brooke Douglas  
Bruce Copeland  
Brynn Ferraro  
Chris Rosburg  
Christopher Ferraro  
Cynthia Simpson  
Daniel Kusmin  
Derek O'Dell  
Derek Dummermuth  
Doug Jones  
Ed Broxterman  
Faron Neal  
Greg Dennis  
Ian Finch  
Jason Taylor  
Jennifer Matney  
Jeremy Schafer  
Jerry Cooke  
Jessica Taylor  
Jim Lipari  
Kat O'Connor Hoover  
Kathy Smith  
Kevin Kalish  
Kyle Rohde  
Kyle Myers  
Lee Brumitt  
Marc Woodward  
Mark Carter  
Matt Pennington  
Matt Linski  
Melissa Seiler  
Michael Giangregorio  
Paul Kushnir  
Rachel Pegg  
Rachel Smith  
Rik Siro  
Rob Smith  
Robert Sprague  
Ruth Brackney  
Ryan Shreve  
Sandy Aschenbrenner  
Sean McCarthy  
Shane Gordon  
Shannon Stites  
Taylor Grossenkemper

TJ Collins  
Tom Holcom  
Tommy Kennedy  
Whitney Elyachar

## THRIFT OPERATIONS BOARD

Alex Block  
Bethany Waddleton  
Brandon McManamy  
Brett Wacha  
Brian Thomas  
Cameron Wilkerson  
Emily Haas  
Jason Buck  
Jeff Shipley  
Manuel Aquino  
Maria Hoheusle  
Melanie Tull  
Michael Briscoe  
Mike Rivera  
Nick Giuliani  
Robert Beltrame  
Sandra Watts  
Scott Keen

## FAMILY ADVISORY BOARD

Amy Drake  
Angela Washington  
Ashley Brockington  
Cecily Griffin  
Charlynn Marshall  
Cindy Villa Aguirre  
Deborah Murphy  
Ebony Love  
Fawn Lee  
Gieselle Taylor  
Kizwana Daniels  
Mandy Danforth  
Marjorie Frazier  
Natasha Grant  
Pateisha Royal  
Patrice Amos  
Tamieka Robinson  
Tonette Cooper  
Xavier Hankins

## BIG IMPACT GROUP

Alex Atkinson  
Andrew Vogliardo  
Anthony Valles  
Avery Bowers  
Caroline Shannon  
Chad Gerdes  
Charlie Mosher  
Cody Blevins  
Dania Isidro  
Dave Gardner  
Derek Stuchlik  
Emily Thorpe  
Erin Williamson  
Jessica Jackson  
Jessica Marsh  
Jordan Canupp  
Justin Mutzbauer  
Kaitlyn Steinacher  
Kate Marxkors  
Kristina Iyamu  
Liz Black  
Loryn Polo  
Mackenzie Magwire  
Megan Heyen  
Megan McClure  
Melanie Clark  
Michael Klingler  
Michelle Fontes  
Michelle Villagrana  
Noah Benham  
Olivia Meyer  
Paul Silvio  
Ryan Hembrough  
Sam Zimmerman  
Shannon Kilkenny  
Sydney Sutherland  
Teagan Bruce  
Tiandre Miller  
Tim Jardine  
Tony Dougherty  
Zach Boswell  
Zach Harsch

## JEDI ADVISORY BOARD

Alfred Jones  
Allie Rojas-Meier  
Braulio Rivas  
Brian Kantanka  
Brittany Connor  
Brooke Thies  
Casi Riegle  
Cathie Chesen  
Christopher Moore  
Cleo Van Vlack  
David Rodriguez  
Denise White  
Dontavious Young  
Hao Quach  
Iheanyi Amadi  
Jay Hernandez  
Jenna Scott  
Jordan Russo-Hicks  
Kimberlee Fields  
Kyra Kendrick  
Langston Jones  
Lauren Rios  
Leigh Doner  
Makenzy Jean  
Mohamed Dia  
Morgan España-Benitez  
Natalie Gonzales  
Nicolette Rodriguez  
Omar Husain  
Quincy Crutchfield  
Rani Lange  
Sami Dunn  
Shapree Marshall  
Sydney Goldberg  
Veronica Ford



